

TOWNSHIP 38 SOUTH


RANGE 40 EAST

F.A. PROJECT NO.	SHEET NO.
1-95-2152104	

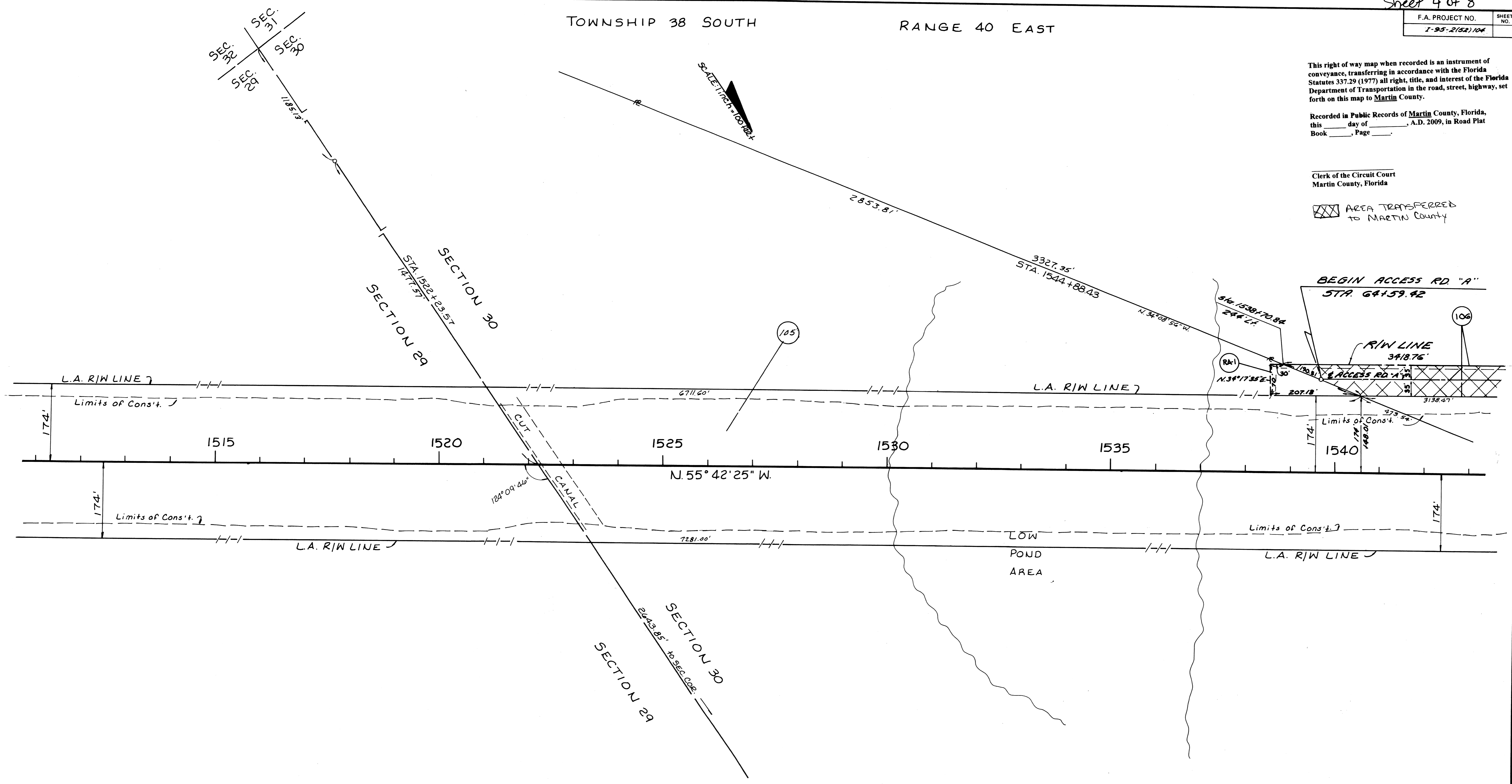
This right of way map when recorded is an instrument of conveyance, transferring in accordance with the Florida Statutes 337.29 (1977) all right, title, and interest of the Florida Department of Transportation in the road, street, highway, set forth on this map to Martin County.

Recorded in Public Records of Martin County, Florida, this _____ day of _____, A.D. 2009, in Road Plat Book _____, Page _____.

Clerk of the Circuit Court
Martin County, Florida

 AREA TRANSFERRED TO MARTIN COUNTY

SCALE: 1" = 100 FEET



BEGIN ACCESS RD "A"
STA. 64+59.42

R/W LINE
3418.76'

Limits of Const.

L.A. R/W LINE

Limits of Const.

L.A. R/W LINE

Limits of Const.

L.A. R/W LINE

Limits of Const.

L.A. R/W LINE

Limits of Const.

L.A. R/W LINE

Limits of Const.

L.A. R/W LINE

Limits of Const.

L.A. R/W LINE

Limits of Const.

L.A. R/W LINE

Limits of Const.

FLORIDA DEPARTMENT OF TRANSPORTATION RIGHT OF WAY ENGINEERING SECTION			
RIGHT OF WAY MAP			
STATE ROAD NO. 9(I-95) MARTIN COUNTY			
BY	DATE	APPROVED BY	DATE
R.B.S.	10-2-80	<i>Ellis C. Ford</i>	9-23-82
TRACED			
CHECKED	J.C.B.	11-20-80	W.A.G. 4-26-82
MAPS PREPARED BY		FIELD BOOK NO'S.	
2 nd DISTRICT OFFICE		020135	
W.P.I. NO. 446415		SCALE 1 inch = 100 feet	
SECTION 89095-2414		SHEET 10	

POLYTRACE 033